


AD. DESIERTO DE ATACAMA CALDERA - CHILE

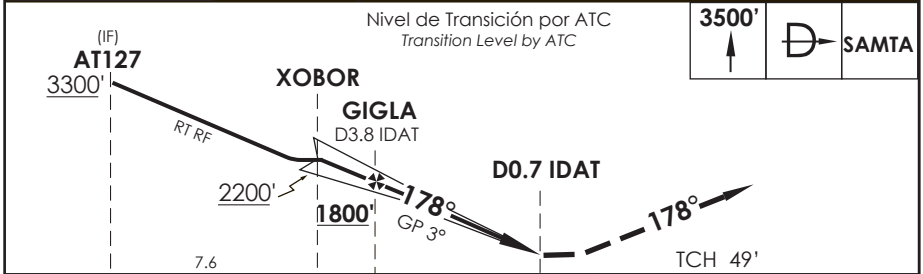
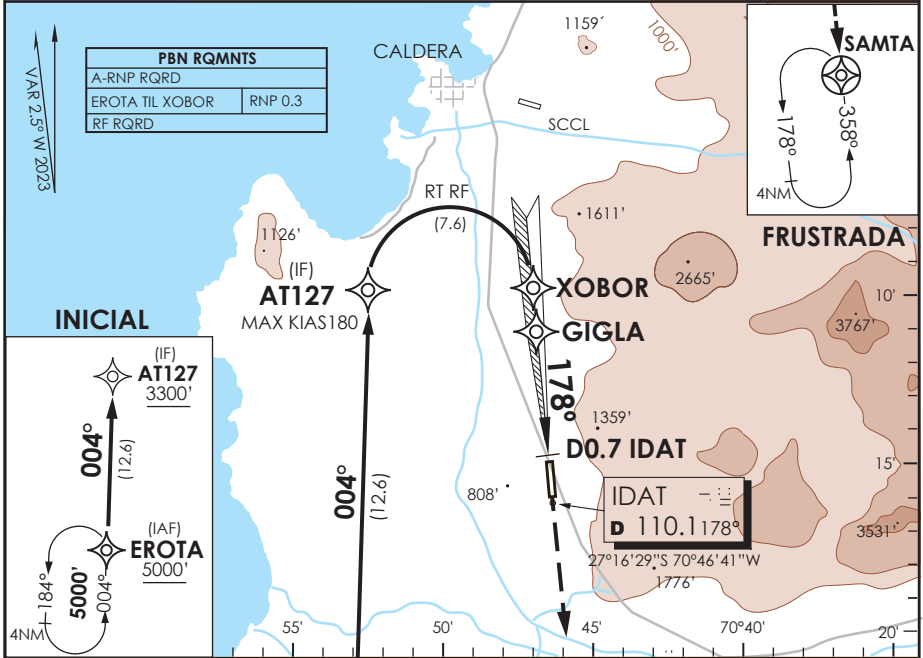
SCAT IAC 2 ILS Y o LOC Y RWY 17

APP IQUIQUE RADAR Iquique Radar Approach	120.3/128.3	TORRE ATACAMA Atacama Tower	118.3	CONTROL TERRESTRE Ground Control	121.6
LOC IDAT	FINAL APCH CRS	MNM ALT GIGLA	DA(H)	AD Elev.	THR 17 Elev.
110.1	178°	1800'	820'(200')	670'	620'

APCH FRUSTRADA: Ascenso 3500' directo a SAMTA, ingrese HLDG 358° izquierdo o según autorización ATC.

Missed Apch: Climb to 3500' direct to SAMTA, enter on HLDG358° left or according to ATC clearance.





C A T E G O R Í A	DIRECTO RWY 17 <i>Straight in RWY 17</i>				CIRCULANDO OESTE Circling West		ALTN Alternate Minimums
	* ILS DA 820' (200')		* LOC WO GP MDA 1080' (460')				
	ALSF-1	WO ALSF-1	ALSF-1	WO ALSF-1			
A	RVR 750 m o 0.8 Km	1.2 Km	1.2 Km	1.6 Km	1120'	1.6 Km	VER PAG. GEN 2.19
B			1.6 Km	2.0 Km	(450')	2.4 Km	
C			2.0 Km	2.4 Km	1220' (550')	3.2 Km	
D							
* WO IDAT DME PROC NA / Procedure not authorized without IDAT DME							
Veloc. Terrestre Kts		80	100	120	140	160	
GP 3°		425'	531'	637'	743'	849'	

DASA / SECCION IAS-MAP